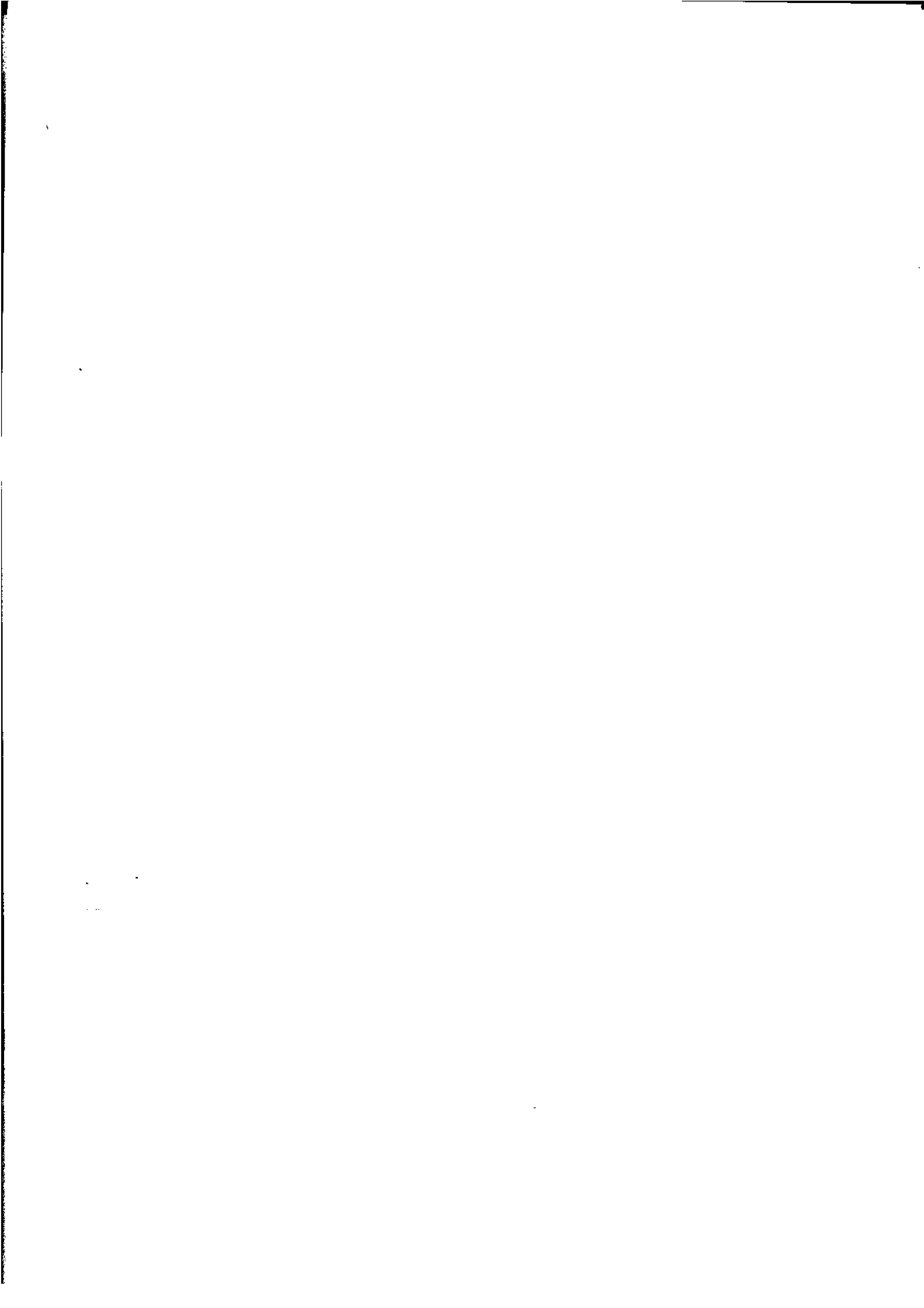




**Australian
Bureau of
Statistics**

**December 1995
Monthly Summary of Statistics
Queensland**

Catalogue No. 1304.3



MONTHLY SUMMARY OF STATISTICS, QUEENSLAND, DECEMBER 1995

CONTENTS

	<i>Page</i>		<i>Page</i>
Population and vital		Finance	
Population	3	Housing finance for owner occupation	14
Vital statistics	3	New fixed capital expenditure by industry group and type of asset	15
Employment and unemployment		Lease, commercial and personal finance	15
Labour force status of the civilian population aged 15 years and over	4	Selected financial institutions: Loans outstanding	16
Civilian labour force: Seasonally adjusted and trend estimates	5	All banks: Deposits and lending	16
Employed wage and salary earners	5	Trade	
Duration of unemployment	6	Value of interstate exports	17
Job vacancies and overtime	6	Value of interstate imports	17
Employed wage and salary earners by industry division	6	Value of foreign exports	18
Industrial disputes causing stoppage of work	7	Value of foreign imports	18
Wages, prices and production		Retail trade: Turnover by industry	19
Average weekly earnings of employees	7	Transport	
Consumer price index, Brisbane	8	Transport services: Queensland Railways and Brisbane City Council	19
Average retail prices of selected items, Brisbane	8	Registration of new motor vehicles and motor vehicles on register	20
Price index of materials used in building, Brisbane	10	Road traffic accidents	20
Manufacturing and foreign trade price indexes, Australia	10	Oil industry: Sales of main petroleum products	21
Production of selected commodities	11	Tourist accommodation	
Wool sales and prices	12	Licensed hotels, motels, etc. with facilities	21
Livestock slaughtered	12	Caravan parks	22
Building		Meteorology	
Building activity	12	Meteorology, Brisbane	22
Building approvals	13		
Building activity: Number of new dwelling units by type and stage of construction	13		

EXPLANATORY NOTES

Statistics shown in this publication are the latest available at the date of preparation. In a number of cases figures appearing in this summary are preliminary and are subject to revision in subsequent issues. Reference should therefore always be made to the latest issue or to the statistical publication on the specific subject when figures are not shown.

Related publications

2. Users may also wish to refer to the following publications which are available on request:

Regional Statistics (1314.3) – Latest issue: 1994 (\$20.00)

INQUIRIES

- for further information about statistics in this publication and the availability of related unpublished statistics, contact the Inquiry Service on Brisbane (07) 3222 6351 (fax (07) 3229 6042) or any ABS State office.
- for information about other ABS statistics and services, telephone, fax or write to the Inquiry Service, Australian Bureau of Statistics (ABS), GPO Box 9817, Brisbane Q 4001.

EXPLANATORY NOTES — *continued***Related publications — *continued****Economic Indicators* (1307.3) — Monthly (\$10.00)*Queensland at a Glance* — Latest issue: 1996 (free)

3. Current publications produced by the ABS are listed in the *Catalogue of Publications and Products* (1101.0). The ABS also issues the *Release Advice* (1105.0) on Tuesdays and Fridays which lists publications to be released in the next few days. Both the *Catalogue* and the *Release Advice* are available from any ABS office.

Symbols and other usages

n.a. not available
 n.y.a. not yet available
 .. not applicable
 * subject to sampling variability too high for most practical purposes
 — nil or rounded to zero (including null cells)
 ——— break in continuity of series

4. Where figures have been rounded, discrepancies may occur between totals and the sums of the component items.

Publications and statements issued by this office during November 1995 are:

November

6 8731.3 Building Approvals, September 1995 ^o
 30 1307.3 Economic Indicators, November 1995

November

30 1304.3 Monthly Summary of Statistics,
 December 1995

^o Information shown for each local government area.

313 Adelaide Street
 BRISBANE Q 4000
 30 November 1995

R. A. Crockett
 DEPUTY COMMONWEALTH STATISTICIAN

© Commonwealth of Australia 1995

POPULATION, QUEENSLAND

Period	Estimated resident population (a)	Natural increase (b)	Net migration			Increase during period		Mean population for period
			Interstate	Overseas	Total	Number	Proportion (c)	
	'000	'000	'000	'000	'000	'000	%	'000
1988-89	2,827.6	22.3	47.1	21.8	68.8	(d) 87.7	3.2	2,783.2
1989-90	2,899.3	23.6	38.1	13.1	51.2	(d) 71.6	2.5	2,865.0
1990-91	2,961.0	25.0	29.7	9.7	39.5	(d) 61.7	2.1	2,930.2
1991-92	3,032.8	25.5	38.2	8.3	46.4	71.9	2.4	2,997.3
1992-93	3,116.0	25.7	53.8	3.7	57.5	83.2	2.7	3,075.1
1993-94	3,196.1	25.8	49.1	5.2	54.3	80.1	2.5	3,157.5
1989	2,864.0	21.6	49.0	15.9	64.8	(d) 83.1	3.0	2,826.3
1990	2,928.7	25.5	32.5	9.3	41.8	(d) 64.7	2.3	2,898.5
1991	2,995.1	25.2	32.8	10.2	42.9	(d) 66.3	2.3	2,962.4
1992	3,071.8	25.5	45.0	6.3	51.3	76.8	2.6	3,034.7
1993	3,155.2	26.5	53.0	4.2	57.2	83.7	2.7	3,117.2
1994	3,232.9	24.6	46.1	6.8	52.9	77.4	2.5	3,196.4
1993—								
December qtr	3,155.5	6.3	11.0	0.1	11.1	17.4	0.6	..
1994—								
March qtr	3,178.5	6.7	14.1	2.3	16.3	23.0	0.7	..
June qtr	3,196.1	6.4	10.8	0.5	11.2	17.6	0.6	..
September qtr	3,215.6	5.6	10.4	3.5	13.9	19.5	0.6	..
December qtr	3,232.9	5.9	10.9	0.6	11.5	17.4	0.5	..
1995—								
March qtr	3,256.0	6.9	12.0	4.1	16.1	23.1	0.7	..

(a) September quarter 1986 to June quarter 1991 figures have been revised to incorporate 1991 Census results. (b) Excess of births over deaths. (c) The rates represent the increase during the period, expressed as a proportion of the population at the beginning of the period. (d) Discrepancies between the sum of natural increase and net migration figures and the total increase figures are due to inter-censal adjustment.

VITAL STATISTICS, QUEENSLAND

Period	Annual rate (b)							
	Births	Deaths	Marriages	Infant deaths (a)	Births (c)	Deaths (c)	Marriages (c)	Infant mortality (d)
1989-90	44,168	20,557	19,386	381	15.2	7.1	6.7	8.6
1990-91	44,429	19,382	19,477	372	15.0	6.5	6.6	8.4
1991-92	45,153	19,690	19,984	349	14.9	6.5	6.6	7.7
1992-93	46,285	20,260	20,428	340	14.9	6.5	6.6	7.3
1993-94	46,623	20,610	20,997	300	14.6	6.4	6.6	6.4
1994-95	46,734	21,511	20,425	307	n.y.a.	n.y.a.	n.y.a.	6.6
1994—								
June qtr	12,577	5,063	5,483	56	15.8	6.4	6.9	4.5
September qtr	11,760	6,297	5,267	63	14.7	7.9	6.6	5.4
December qtr	11,112	5,271	5,577	87	13.8	6.5	6.9	7.8
1995								
March qtr	12,074	5,175	4,375	91	n.y.a.	n.y.a.	n.y.a.	7.5
June qtr	11,788	4,768	5,206	66	n.y.a.	n.y.a.	n.y.a.	5.6
September qtr	11,905	5,599	4,206	72	n.y.a.	n.y.a.	n.y.a.	6.0
1995—								
May	3,869	1,679	2,274	31	8.0
June	4,549	1,830	1,702	20	4.4
July	4,556	1,562	1,389	21	4.6
August	3,950	2,010	1,486	30	7.6
September	3,399	2,027	1,331	21	6.2
October	3,746	1,975	2,698	21	5.6

(a) Deaths of children aged under 1 year. (b) For quarterly periods, an equivalent annual rate for each quarter. (c) Per 1,000 mean estimated resident population. (d) Infant deaths per 1,000 live births.

LABOUR FORCE STATUS OF THE CIVILIAN POPULATION AGED 15 YEARS AND OVER (a), QUEENSLAND

Month	Unemployed		Total labour force		Not in labour force	Civilian population aged 15 years and over	
	Employed	Number	Unemployment rate	Number			Participation rate
	'000	'000	%	'000	%	'000	
MALES							
1994—							
August	831.6	77.4	8.5	909.0	74.0	319.8	1,228.8
September	843.6	78.1	8.5	921.7	74.8	310.1	1,231.8
October	845.6	73.9	8.0	919.4	74.5	315.4	1,234.9
November	840.6	77.0	8.4	917.5	74.1	320.4	1,237.9
December	855.7	77.7	8.3	933.4	75.2	307.6	1,241.0
1995							
January	837.0	87.6	9.5	924.6	74.3	319.5	1,244.1
February	846.5	89.5	9.6	935.9	75.0	311.3	1,247.3
March	851.8	88.3	9.4	940.1	75.2	310.3	1,250.4
April	856.9	86.9	9.2	943.8	75.3	309.7	1,253.5
May	848.3	94.5	10.0	942.8	75.0	313.7	1,256.6
June	860.8	85.2	9.0	945.9	75.1	313.7	1,259.6
July	860.2	85.3	9.0	945.5	74.9	317.2	1,262.7
August	857.5	83.8	8.9	941.3	74.4	324.4	1,265.7
September	870.5	90.8	9.4	961.3	75.8	307.4	1,268.7
October	858.5	92.9	9.8	951.4	74.8	320.1	1,271.5
FEMALES							
1994—							
August	602.1	58.1	8.8	660.2	52.7	592.9	1,253.1
September	627.1	62.0	9.0	689.1	54.9	566.9	1,256.0
October	621.1	53.4	7.9	674.5	53.6	584.4	1,258.9
November	630.9	56.6	8.2	687.5	54.5	574.4	1,261.8
December	631.6	56.8	8.3	688.4	54.4	576.4	1,264.8
1995—							
January	608.6	58.8	8.8	667.5	52.6	600.4	1,267.9
February	634.2	70.4	10.0	704.6	55.4	566.4	1,271.0
March	645.6	70.9	9.9	716.5	56.2	557.6	1,274.1
April	656.9	58.8	8.2	715.7	56.1	561.2	1,276.9
May	649.3	61.2	8.6	710.5	55.5	569.3	1,279.8
June	657.6	59.7	8.3	717.3	55.9	565.4	1,282.7
July	657.0	54.3	7.6	711.4	55.3	574.2	1,285.6
August	642.8	58.2	8.3	700.9	54.4	587.6	1,288.5
September	656.2	59.1	8.3	715.3	55.4	576.2	1,291.5
October	647.8	56.5	8.0	704.3	54.4	590.1	1,294.5
PERSONS							
1994—							
August	1,433.7	135.5	8.6	1,569.2	63.2	912.6	2,481.8
September	1,470.7	140.1	8.7	1,610.8	64.8	876.9	2,487.8
October	1,466.7	127.3	8.0	1,594.0	63.9	899.8	2,493.8
November	1,471.5	133.5	8.3	1,605.0	64.2	894.8	2,499.8
December	1,487.3	134.5	8.3	1,621.8	64.7	884.0	2,505.8
1995—							
January	1,445.6	146.5	9.2	1,592.1	63.4	919.9	2,512.0
February	1,480.6	159.9	9.7	1,640.5	65.1	877.7	2,518.2
March	1,497.4	159.2	9.6	1,656.6	65.6	867.9	2,524.5
April	1,513.7	145.8	8.8	1,659.5	65.6	870.9	2,530.4
May	1,497.6	155.7	9.4	1,653.3	65.2	883.0	2,536.4
June	1,518.4	144.9	8.7	1,663.3	65.4	879.1	2,542.3
July	1,517.2	139.7	8.4	1,656.9	65.0	891.4	2,548.3
August	1,500.3	141.9	8.6	1,642.2	64.3	912.0	2,554.2
September	1,526.8	149.9	8.9	1,676.7	65.5	883.6	2,560.2
October	1,506.3	149.4	9.0	1,655.7	64.5	910.2	2,565.9

(a) See the Explanatory Notes in the ABS publication *The Labour Force* (6203.0). Estimates are based on 1991 Population Census benchmarks.

CIVILIAN LABOUR FORCE (a), QUEENSLAND

Month	Employed persons	Unemployed persons	Labour force	Unemployment rate	Participation rate
	'000	'000	'000	%	%
SEASONALLY ADJUSTED ESTIMATES (a)					
1994—					
September	1,452.3	146.7	1,598.9	9.2	64.3
October	1,455.0	143.2	1,598.3	9.0	64.1
November	1,464.9	144.5	1,609.5	9.0	64.4
December	1,466.0	134.3	1,600.3	8.4	63.9
1995					
January	1,470.7	136.8	1,607.4	8.5	64.0
February	1,493.2	144.1	1,637.3	8.8	65.0
March	1,499.7	146.8	1,646.6	8.9	65.2
April	1,519.7	138.4	1,658.1	8.3	65.5
May	1,503.7	153.7	1,657.4	9.3	65.3
June	1,516.0	147.2	1,663.2	8.9	65.4
July	1,517.9	142.5	1,660.4	8.6	65.2
August	1,509.1	151.4	1,660.5	9.1	65.0
September	1,507.6	157.3	1,665.0	9.5	65.0
October	1,494.1	168.5	1,662.6	10.1	64.8

TREND ESTIMATES (a)

1994—					
September	1,449.5	143.5	1,593.0	9.0	64.0
October	1,455.2	142.4	1,597.6	8.9	64.1
November	1,461.8	141.1	1,602.9	8.8	64.1
December	1,470.0	140.2	1,610.2	8.7	64.3
1995—					
January	1,479.4	140.2	1,619.7	8.7	64.5
February	1,489.6	141.3	1,631.0	8.7	64.8
March	1,499.5	143.0	1,642.5	8.7	65.1
April	1,507.8	144.4	1,652.2	8.7	65.3
May	1,512.7	145.8	1,658.5	8.8	65.4
June	1,513.7	147.4	1,661.1	8.9	65.3
July	1,512.2	149.7	1,661.9	9.0	65.2
August	1,509.6	153.0	1,662.6	9.2	65.1
September	1,506.5	156.7	1,663.3	9.4	65.0
October	1,502.7	160.6	1,663.4	9.7	64.8

(a) See the Explanatory Notes in the ABS publication *The Labour Force* (6203.0). Estimates are based on 1991 Population Census benchmarks.

EMPLOYED WAGE AND SALARY EARNERS, QUEENSLAND
(^{'000})

Month	Private sector (a)	Government sector			Total	All employed wage and salary earners
		Commonwealth	State	Local		
1994—						
January	683.6	44.8	181.7	33.1	259.6	943.2
February	697.7	44.8	188.3	33.2	266.3	964.0
March	694.7	44.9	195.3	33.7	274.0	968.7
April	679.7	45.1	194.6	33.4	273.1	952.8
May	685.6	44.7	192.7	33.7	271.1	956.7
June	685.4	44.8	195.7	33.6	274.2	959.6
July	655.4	43.3	184.8	33.6	261.7	917.1
August	662.2	43.5	190.4	33.2	267.1	929.2
September	658.3	43.5	190.6	33.1	267.2	925.6
October	704.4	45.6	191.7	32.7	269.9	974.3
November	712.8	45.8	195.3	32.7	273.7	986.5
December	719.1	47.5	193.4	32.7	273.6	992.7
1995—						
January	726.6	45.7	186.1	32.7	264.6	991.2
February	740.1	45.4	191.7	33.4	270.4	1,010.5
March	741.6	45.5	193.1	33.8	272.4	1,014.0

(a) Estimates are based on a sample survey and subject to sampling variability. See the Explanatory Notes in the publication *Employed Wage and Salary Earners, Australia* (6248.0).

DURATION (a) OF UNEMPLOYMENT (b), QUEENSLAND

Period	Number of persons unemployed for						Total	Median duration weeks
	Less than 4 weeks	4 and under 8 weeks	8 and under 13 weeks	13 and under 26 weeks	26 and under 52 weeks	52 weeks or more		
	'000	'000	'000	'000	'000	'000	'000	
June—								
1990	25.1	11.9	13.9	21.1	19.2	20.0	111.2	14
1991	19.8	15.8	14.0	28.4	27.5	26.4	131.8	20
1992	21.7	14.8	14.0	32.3	29.2	47.0	159.1	24
1993	23.4	15.4	11.5	28.6	32.5	45.2	156.7	24
1994	22.6	14.9	11.2	28.6	25.2	41.0	143.5	22
1995	23.2	17.6	11.4	31.7	26.1	34.8	144.9	22
1994—								
August	19.2	15.4	13.7	18.3	30.1	38.8	135.5	26
September	24.3	17.6	13.3	20.2	28.8	35.8	140.1	21
October	23.9	14.4	12.7	16.9	21.9	37.5	127.3	20
November	23.7	13.6	11.8	16.6	28.8	39.1	133.5	26
December	31.2	15.9	9.3	19.0	19.2	39.8	134.5	17
1995—								
January	28.5	28.1	17.1	20.6	18.2	34.1	146.5	12
February	32.8	25.6	20.6	23.4	18.4	39.0	159.9	13
March	28.3	21.3	24.8	22.9	22.1	39.8	159.2	13
April	26.4	23.0	15.6	30.4	14.9	35.6	145.8	14
May	22.4	19.8	15.5	38.4	21.6	38.1	155.7	18
June	23.2	17.6	11.4	31.7	26.1	34.8	144.9	22
July	23.6	13.6	15.0	26.9	22.6	37.9	139.7	20
August	22.4	20.0	11.6	22.2	33.5	32.4	141.9	22
September	26.2	19.2	17.8	21.1	32.1	33.5	149.9	17
October	25.7	20.3	17.4	20.4	28.7	36.8	149.4	17

(a) Period from the time the person began looking for work or was stood down, to the end of survey week. (b) See the Explanatory Notes in the ABS publication *The Labour Force* (6203.0). Estimates are based on 1991 Population Census benchmarks.

JOB VACANCIES AND OVERTIME, QUEENSLAND

Month	Number of job vacancies			Job vacancy rate (a)	Average weekly overtime hours per employee		Proportion of employees in the survey working overtime
	Sector		Total		In the survey	Working overtime	
	Private	Government					
	'000	'000	'000	%	No.	No.	%
1994—							
May	4.9	1.3	6.1	0.6	1.29	7.28	17.71
August	11.1	1.7	12.8	1.3	1.31	6.83	19.17
November	7.8	1.5	9.4	0.9	1.25	6.29	19.84
1995							
February	*8.0	1.5	9.5	1.0	1.21	6.70	18.13
May	4.5	1.6	6.1	0.6	1.16	6.65	17.48
August	7.8	1.6	9.3	0.9	1.08	6.20	17.37

(a) The number of job vacancies as a proportion of the number of employees plus vacancies.

EMPLOYED WAGE AND SALARY EARNERS BY INDUSTRY DIVISION, QUEENSLAND ('000)

Industry division	1994			1995		
	October	November	December	January	February	March
Manufacturing	140.2	141.4	139.0	132.8	133.6	133.3
Construction	50.9	50.9	51.7	52.4	50.1	48.0
Wholesale and retail trade	200.3	203.6	208.4	200.9	203.1	204.8
Transport and storage	49.2	49.9	49.6	49.3	49.1	48.7
Finance, property and business services	92.1	94.6	93.9	99.6	100.7	99.3
Community services	234.3	239.0	238.1	243.4	256.6	258.4
Recreation, personal and other services (a)	99.9	99.6	102.2	106.4	108.3	111.3
Other (b)	107.4	107.5	109.8	106.4	109.0	110.2
Total	974.3	986.5	992.7	991.2	1,010.5	1,014.0

(a) Excluding private households employing staff. (b) Including employees in government agencies classified to agriculture, forestry, fishing and hunting.

INDUSTRIAL DISPUTES CAUSING STOPPAGE OF WORK, QUEENSLAND

Period	Number of disputes		Employees involved		Working days lost '000
	Commenced in period	Total (a)	Newly involved (b)	Total (a)	
	No.	No.	'000	'000	
1989-90	172	173	42.3	42.3	98.7
1990-91	178	182	73.5	74.0	117.0
1991-92	135	139	39.9	58.4	84.4
1992-93	123	124	65.4	65.5	80.8
1993-94	110	114	56.2	59.4	147.8
1994-95	164	164	67.4	67.4	190.5
<i>1994</i>					
May	9	10	2.1	2.2	3.6
June	13	13	2.1	2.1	17.9
July	11	11	1.9	1.9	2.9
August	11	11	12.2	12.2	12.8
September	11	11	2.1	2.1	3.8
October	20	21	7.7	7.8	16.2
November	18	20	4.1	5.3	17.9
December	13	17	13.4	14.2	18.8
<i>1995</i>					
January	10	14	2.1	4.4	5.3
February	19	23	6.9	11.5	27.9
March	17	24	8.2	11.7	20.9
April	6	12	2.0	6.4	9.1
May	10	14	4.3	6.1	45.2
June	14	18	2.3	3.0	9.3
July	17	21	3.2	4.0	19.3

(a) All disputes involving stoppages of 10 working days or more which were in progress during the period. (b) Comprises employees involved in disputes which commenced during the month and additional employees involved in disputes which continued from the previous month.

AVERAGE WEEKLY EARNINGS OF EMPLOYEES, QUEENSLAND
(\$)

Quarter	Males			Females			Persons		
	Full-time adults		All males	Full-time adults		All females	Full-time adults		All employees
	Weekly ordinary time earnings	Weekly total earnings	Weekly total earnings	Weekly ordinary time earnings	Weekly total earnings	Weekly total earnings	Weekly ordinary time earnings	Weekly total earnings	Weekly total earnings
<i>1992</i>									
February	575.10	617.50	555.20	481.70	490.30	364.90	542.30	572.90	467.80
May	581.30	623.40	561.70	469.30	479.90	360.90	540.50	571.20	467.00
August	575.00	616.30	560.10	484.90	496.30	372.90	543.50	574.30	471.70
November	586.20	633.20	570.60	483.70	493.60	365.30	550.00	584.00	473.30
<i>1993</i>									
February	590.80	633.20	573.20	502.90	511.50	381.40	559.90	590.40	484.30
May	601.90	645.00	586.80	501.40	512.20	375.70	567.70	599.90	489.00
August	603.40	646.30	584.90	511.90	523.20	383.20	571.80	603.70	490.60
November	613.50	665.30	599.90	509.70	522.10	378.20	577.50	615.70	496.20
<i>1994</i>									
February	615.60	666.30	605.10	515.80	526.30	384.40	581.00	617.70	502.90
May	616.90	671.90	609.90	516.00	529.30	395.20	582.50	623.30	511.10
August	610.20	662.10	589.00	530.50	540.90	401.20	583.20	621.00	505.50
November	623.30	681.60	595.50	526.10	536.90	390.00	589.90	631.90	501.80
<i>1995</i>									
February	629.60	682.00	587.00	531.70	541.90	390.10	595.50	633.10	496.00
May	643.50	694.80	596.40	545.40	556.30	396.20	608.90	645.80	501.20
August	641.40	689.10	600.00	546.20	557.80	399.10	607.60	642.40	503.50

CONSUMER PRICE INDEX, BRISBANE
(Base of Each Index: Year 1989-90 = 100.0)

<i>Period</i>	<i>Food</i>	<i>Clothing</i>	<i>Housing</i>	<i>Household equipment and operation</i>	<i>Transport- ation</i>	<i>Tobacco and alcohol</i>	<i>Health and personal care</i>	<i>Recreation and education</i>	<i>All groups</i>
1993-94	110.2	105.7	100.3	106.7	112.5	132.2	122.6	111.0	110.6
1994-95	112.6	105.8	106.2	109.2	116.3	140.0	130.6	115.8	114.7
<i>1994</i>									
June qtr	110.2	105.4	100.7	107.2	113.8	134.1	124.6	113.5	111.5
September qtr	110.7	105.3	101.1	107.9	115.8	136.5	128.5	113.5	112.5
December qtr	111.0	106.3	104.0	109.1	115.4	138.4	128.4	115.5	113.7
<i>1995-</i>									
March qtr	114.1	105.5	109.0	109.2	116.7	140.9	131.8	117.2	115.8
June qtr	114.5	105.9	110.7	110.6	117.4	144.1	133.6	117.0	116.9
September qtr	115.4	105.3	111.4	111.6	120.1	145.6	134.1	116.8	117.9

AVERAGE RETAIL PRICES OF SELECTED ITEMS (a), BRISBANE
(cents)

<i>Item</i>	<i>Unit</i>	<i>Quarter ended</i>							
		<i>Year</i>		<i>1993 94</i>			<i>1994 95</i>		
		<i>1993</i>	<i>1994</i>	<i>December</i>	<i>March</i>	<i>June</i>	<i>December</i>	<i>March</i>	<i>June</i>
Dairy produce									
Milk, carton (b)	1 litre	104	106	105	105	105	107	111	111
Milk, powdered, full cream	750 g pkt	(c) 541	431	434	424	429	436	419	444
Cheese, processed, sliced, wrapped	500 g pkt	360	353	341	357	368	342	352	353
Butter	500 g	159	156	153	157	157	155	146	148
Cereal products									
Bread, white, sliced (b)	680 g	141	147	145	145	146	153	168	171
Biscuits, dry	250 g pkt	132	134	139	138	137	132	132	140
Breakfast cereal, corn-based	550 g pkt	304	311	300	319	309	310	325	341
Flour, self-raising	2 kg pkt	229	240	223	239	249	232	241	250
Rice, medium grain	1 kg pkt	108	113	107	112	116	115	113	126
Meat and seafoods									
Beef									
Silverside roast	1 kg	(d) 575	806	(d) 575	(d) 605	804	782	748	820
Rump steak	1 kg	1,079	1,143	1,112	1,139	1,148	1,139	1,130	1,138
T-bone steak, with fillet	1 kg	964	1,004	986	1,010	1,005	999	1,007	984
Chuck steak	1 kg	626	645	640	643	655	635	622	624
Silverside, corned	1 kg	642	651	655	649	645	654	647	613
Lamb									
Leg	1 kg	583	554	596	593	574	503	530	567
Loin chops	1 kg	747	754	788	777	777	713	728	730
Forequarter chops	1 kg	496	480	500	507	488	461	466	454
Pork									
Leg	1 kg	564	553	587	560	534	569	528	516
Loin chops	1 kg	777	795	795	802	797	771	795	783
Chicken, frozen	1 kg	278	288	278	287	305	288	293	294
Bacon, middle rashers	250 g pkt	302	300	300	306	305	290	273	275
Beef, corned	340 g can	251	254	255	253	256	257	268	279
Sausages	1 kg	448	447	447	452	461	430	424	404
Salmon, pink	210 g can	238	223	236	230	221	232	246	241

AVERAGE RETAIL PRICES OF SELECTED ITEMS (a), BRISBANE — continued
(cents)

Item	Unit	Quarter ended							
		Year			1993-94		1994-95		
		1993	1994	December	March	June	December	March	June
Fruit and vegetables									
Oranges	1 kg	108	111	103	113	118	102	105	114
Bananas	1 kg	133	173	105	127	155	184	234	168
Potatoes	1 kg	81	83	70	75	73	106	109	106
Tomatoes	1 kg	216	200	261	278	182	187	270	286
Carrots	1 kg	118	103	86	109	103	100	164	142
Onions	1 kg	152	93	176	108	96	78	98	113
Peaches	825 g can	195	192	198	203	194	175	186	193
Pineapple, sliced	450 g can	83	83	83	84	85	80	84	88
Peas, frozen	500 g pkt	129	130	134	119	120	142	128	118
Confectionery									
Chocolate, milk, block	250 g	228	240	244	232	240	229	246	245
Other food									
Eggs	52 g (min.), 1 doz.	205	211	197	205	212	216	232	237
Sugar, white	2 kg pkt	177	197	188	198	192	187	194	193
Jam, strawberry	500 g jar	230	233	237	232	236	233	228	241
Tea	250 g pkt	172	173	181	175	179	174	176	176
Coffee, instant	150 g jar	401	438	407	418	391	534	574	602
Tomato sauce	600 ml bottle	182	185	183	187	180	194	197	201
Margarine, polyunsaturated	500 g tub	137	131	133	138	131	130	148	157
Baked beans (in tomato sauce)	440 g can	94	99	98	97	99	101	100	97
Baby food	125 g can	55	53	57	55	55	51	55	57
Household supplies									
Laundry detergent	1 kg	445	471	449	490	476	447	443	464
Dishwashing detergent	1 litre	(e) 404	342	352	347	349	331	339	343
Facial tissues	pkt of 224	207	183	202	199	191	173	172	175
Toilet paper	4 x 280 sheet rolls	(f) 297	288	295	285	284	286	300	275
Pet food	410 g can	(g) 83	94	91	95	96	95	89	97
Motor vehicle operation									
Petrol, leaded	1 litre	61.6	60.8	61.9	58.8	61.8	60.3	62.6	63.8
Petrol, unleaded	1 litre	..	59.5	..	58.2	60.8	58.3	60.6	61.8
Alcoholic beverages									
Beer, low alcohol, unchilled	24 x 375 ml bottles	1,987	2,088	2,034	2,059	2,062	2,124	2,135	2,203
Beer, full strength, unchilled	24 x 375 ml bottles	2,326	2,371	2,363	2,344	2,349	2,412	2,433	2,480
Draught beer, full strength, public bar	285 ml glass	158	163	160	161	162	164	165	168
Draught beer, low alcohol, public bar	285 ml glass	144	149	146	146	149	151	152	155
Scotch, nip, public bar	30 ml	222	234	226	227	237	236	239	242
Personal care products									
Toilet soap	2 x 125 g	(h) (i) 202	152	152	146	153	149	140	166
Toothpaste	140 g tube	219	223	215	230	226	215	219	235

(a) Average prices of specific brands, etc. charged by a number of representative retailers. They do not purport to be the actual averages of all sales of these items. Refer to the Explanatory Notes in the ABS publication *Average Retail Prices of Selected Items, Eight Capital Cities (6403.0)* for more details. (b) Supermarket sales. (c) 1 kg can. Price based on March quarter. (d) Prices not comparable with other periods due to change in product specification. (e) Price based on March and June quarters. (f) 4 x 300 sheet rolls. Price based on March quarter. (g) 415 g can. Price based on March quarter. (h) Price based on March, June and September quarters. (i) 4 x 125 g.

PRICE INDEX OF MATERIALS USED IN BUILDING, BRISBANE

Group	1994					1995		
	1993-94	1994-95	July	August	September	July	August	September
HOUSE BUILDING (BASE OF EACH INDEX: YEAR 1985-86 = 100.0)								
All groups	152.2	155.4	153.5	153.5	154.0	155.9	155.9	155.9
BUILDING OTHER THAN HOUSE BUILDING (BASE OF EACH INDEX: YEAR 1989-90 = 100.0)								
Selected major building materials								
Structural timber	123.8	124.0	124.2	124.4	123.5	120.9	120.9	120.5
Clay bricks	113.2	112.7	112.2	112.2	114.3	109.9	106.5	106.5
Ready-mixed concrete	114.8	114.7	115.6	116.4	116.8	107.9	107.3	107.7
Precast concrete products	112.8	113.8	113.4	113.4	112.7	110.7	111.1	111.3
Steel decking and cladding	105.6	105.1	105.2	105.2	105.2	105.8	105.5	105.5
Structural steel	118.7	126.8	122.5	122.5	123.1	132.2	132.2	133.0
Reinforcing steel bar, fabric and mesh	119.3	119.1	119.6	119.6	119.6	119.1	117.6	119.4
Aluminium windows	100.4	102.7	101.2	101.2	101.2	105.2	105.2	105.2
Fabricated steel products	114.7	117.4	117.4	119.0	119.8	115.8	116.5	116.3
Builders' hardware	110.0	111.3	110.9	111.0	110.8	111.6	111.6	110.4
Sand and aggregate	141.0	155.0	153.8	153.8	153.8	156.7	156.6	156.6
Carpet	95.5	92.6	96.3	93.6	92.3	92.6	92.8	92.8
Paint and other coatings	112.6	115.1	111.3	113.3	113.3	117.2	121.9	124.2
Nonferrous pipes and fittings	126.4	141.0	133.8	131.3	131.8	158.3	160.2	166.0
Special combinations of building materials								
All electrical materials	98.4	103.1	99.2	99.0	98.6	110.5	111.2	112.2
All mechanical services	106.8	108.5	106.8	107.0	107.3	111.5	111.2	111.4
All plumbing materials	112.9	116.5	113.6	112.8	113.7	123.6	125.4	127.2
All groups, excluding electrical materials and mechanical services	112.5	115.4	113.7	113.7	114.5	117.0	116.9	117.4
All groups	110.1	112.9	111.1	111.1	111.7	115.1	115.1	115.5

MANUFACTURING AND FOREIGN TRADE PRICE INDEXES, AUSTRALIA

Period	Manufacturing price indexes			Export price index numbers (c)				Import price index numbers (c)		
	Materials used (a)			Articles produced (b)	Mineral products	Wool and cotton fibres	Base metals and articles of base metals	All groups	Machinery and transport equip.	All groups
	Imported	Home produced	All materials							
1989-90	121.1	117.9	119.0	106.5	100.0	100.0	100.0	100.0	100.0	100.0
1990-91	124.7	123.3	123.8	111.2	108.3	77.8	92.6	95.0	102.7	103.2
1991-92	123.3	119.3	120.7	111.6	103.1	66.6	79.7	89.6	104.8	102.7
1992-93	130.6	124.6	126.6	114.3	108.2	60.9	81.0	93.5	116.8	112.1
1993-94	131.7	120.9	124.6	115.5	100.9	59.0	76.3	91.8	123.1	115.6
1994-95	136.5	123.7	128.1	118.1	95.1	80.8	96.8	94.7	121.1	114.8
1994—										
July	131.1	121.9	125.1	116.2	93.0	71.1	83.2	90.6	121.4	113.7
August	132.2	122.1	125.6	116.2	92.8	71.4	83.4	90.0	120.3	113.2
September	132.1	120.7	124.6	116.3	92.4	73.3	85.3	91.0	120.0	113.2
October	133.6	120.6	125.1	116.8	93.0	79.6	90.6	92.7	120.2	113.4
November	134.0	120.6	125.3	117.3	92.6	79.4	93.7	92.7	119.3	112.7
December	132.6	120.3	124.5	117.3	90.7	81.3	98.1	92.4	116.3	110.6
1995—										
January	132.1	122.9	126.1	118.1	92.4	81.9	102.6	93.9	116.5	111.3
February	136.0	125.1	128.9	119.1	94.8	81.8	106.5	96.1	118.7	113.7
March	139.4	125.8	130.5	119.4	96.4	86.3	105.7	97.5	121.9	116.2
April	141.9	126.6	131.9	119.9	98.4	89.1	103.3	98.9	124.5	118.0
May	145.5	128.0	134.0	120.4	101.0	89.2	103.7	99.9	126.3	120.1
June	147.1	129.2	135.4	120.6	103.1	85.6	105.4	100.3	127.4	121.4
July	147.1	127.1	134.0	121.1	102.1	88.2	107.2	100.6	126.5	121.0
August	144.7	125.7	132.3	121.0	100.7	84.8	105.4	98.6	122.9	118.2
September	143.9	124.3	131.1	120.5	99.3	80.3	101.5	96.4	119.7	116.5

(a) Base: year 1984-85 = 100.0. (b) Base: year 1988-89 = 100.0. (c) Base: year 1989-90 = 100.0.

PRODUCTION OF SELECTED COMMODITIES (a), QUEENSLAND

Meat produced (b)

Period	Beef	Veal	Mutton	Lamb	Pigmeats (c)
	tonnes	tonnes	tonnes	tonnes	tonnes
1989-90	620,810	6,634	16,005	16,084	72,141
1990-91	681,234	6,598	18,759	16,687	75,778
1991-92	717,477	6,737	32,519	16,812	79,013
1992-93	753,477	7,179	26,656	10,570	79,749
1993-94	742,701	6,352	17,326	11,072	84,553
1994-95	694,550	4,845	9,143	7,847	82,235
<i>1994—</i>					
July	69,661	429	1,107	849	6,985
August	70,400	442	835	764	6,766
September	75,101	413	979	723	6,935
October	60,905	382	917	535	6,881
November	62,907	338	722	453	7,186
December	49,828	341	537	385	6,469
<i>1995—</i>					
January	31,450	387	543	496	5,669
February	44,006	365	560	470	6,608
March	53,539	448	744	790	7,302
April	48,232	336	672	787	6,207
May	63,477	484	763	867	7,406
June	65,044	482	763	726	7,822
July	57,869	425	715	643	6,293
August	66,485	358	684	684	6,954
September	64,916	274	763	715	7,167

Period	Dressed weight of chickens slaughtered	Butter (d) (e)	Cheese, non-processed (d) (e)	Total factory intake of whole milk (e)	Wheaten flour
	'000 kg	'000 kg	'000 kg	million litres	tonnes
1989-90	59,907	4,195	12,842	629	191,487
1990-91	60,899	3,608	12,397	624	198,272
1991-92	64,081	3,424	11,885	635	206,483
1992-93	67,305	5,870	12,213	702	210,602
1993-94	72,000	6,774	16,502	764	226,802
1994-95	74,477	5,462	15,330	740	234,554
<i>1994—</i>					
July	7,174	433	1,326	61	19,267
August	6,004	512	1,327	63	20,837
September	6,372	561	1,349	64	20,184
October	6,706	461	1,268	66	19,294
November	5,692	476	1,179	62	20,765
December	5,858	468	1,485	64	17,467
<i>1995—</i>					
January	6,421	455	1,393	65	17,387
February	5,879	449	902	58	17,648
March	6,437	498	1,623	65	21,754
April	5,896	379	1,235	57	17,541
May	5,898	370	1,163	56	20,290
June	6,141	401	1,218	58	22,120
July	7,153	246	1,093	61	20,483
August	5,550	372	1,269	63	20,904
September	6,202	n.y.a.	n.y.a.	65	n.y.a.

(a) Excluding producers with fewer than four persons employed and minor production from essentially non-manufacturing activities. (b) Including livestock slaughtered on farms. Dressed carcass weight. Excluding offal. (c) Including quantities used to produce bacon and ham. (d) Excluding farm production. (e) Source: Australian Dairy Corporation.

WOOL SALES AND PRICES, QUEENSLAND
(Source: The National Council of Wool Selling Brokers of Australia)

Particulars	Unit	1994					1995		
		1993-94	1994-95	July	August	September	July	August	September
Wool received into stores (a)	bales	281,195	272,951	33,936	35,892	31,252	26,315	29,325	24,907
Wool sold									
Quantity	'000 kg	54,233	49,738	106	8,170	7,188	1,800	4,429	2,876
Amount realised	\$'000	172,829	216,959	389	29,627	29,313	7,518	16,605	12,266
Average price per kilogram	cents	318.68	436.20	367.33	362.63	407.80	417.62	374.95	426.43

(a) Queensland wool, excluding wool for resale.

LIVESTOCK SLAUGHTERED (a), QUEENSLAND

Particulars	Unit	1994					1995		
		1993-94	1994-95	July	August	September	July	August	September
Cattle	'000 head	2,781.8	2,554.7	257.1	265.1	271.3	211.6	249.8	239.8
Calves	'000 head	148.7	114.6	10.2	9.6	9.9	9.6	8.9	7.3
Sheep	'000 head	856.6	476.6	55.3	55.0	49.5	37.6	38.3	38.9
Lambs	'000 head	669.6	469.8	50.5	49.6	42.5	38.1	40.1	39.5
Pigs	'000 head	1,207.9	1,148.9	97.2	96.1	99.5	86.5	96.0	97.5

(a) Including livestock slaughtered on farms.

BUILDING ACTIVITY (a), QUEENSLAND

Period	Dwelling units in new residential buildings (b)			Value of building work completed				Value of work done in period
	Commenced	Completed	Under construction at end of period	New houses	New other residential buildings	Non-residential building	Total (c)	
1989-90	33,434	39,430	12,410	2,149.7	942.3	2,662.6	5,907.6	5,381.0
1990-91	31,769	32,737	11,120	1,987.1	791.3	1,788.3	4,737.3	4,610.7
1991-92	38,541	35,862	13,609	2,232.0	685.2	1,495.7	4,603.2	4,736.9
1992-93	46,985	45,541	14,760	2,907.3	771.9	1,700.4	5,608.2	5,467.0
1993-94	53,085	49,615	17,993	3,015.8	1,007.3	1,391.7	5,644.9	5,993.1
1994-95	46,162	48,177	15,692	3,161.1	1,091.9	1,741.2	6,239.2	6,823.3
1994-								
March qtr	11,774	10,956	15,783	674.8	237.2	343.0	1,305.7	1,342.1
June qtr	13,615	11,466	17,993	671.6	243.6	313.6	1,285.9	1,557.6
September qtr	14,837	12,582	20,144	802.4	269.3	308.3	1,434.9	1,827.7
December qtr	13,103	14,417	18,767	950.9	309.6	483.9	1,813.1	1,856.8
1995-								
March qtr	8,995	11,668	16,048	732.7	286.0	455.0	1,528.5	1,550.4
June qtr	9,227	9,511	15,692	675.1	227.0	494.0	1,462.7	1,588.4

(a) The scope of building activity includes: (i) all new residential buildings, irrespective of value, and alterations and additions to residential buildings with an approval value of \$10,000 and over and (ii) non-residential building (including alterations and additions to existing buildings): for periods prior to September quarter 1990, jobs with an approval value of \$30,000 and over; for periods from September quarter 1990, jobs with an approval value of \$50,000 and over. (b) From September quarter 1991, these figures are presented as actual estimates and are no longer rounded to the nearest 10 units as in earlier periods. (c) Including alterations and additions (valued at \$10,000 and over) to residential buildings, which are not shown in the foregoing columns.

BUILDING APPROVALS (a), QUEENSLAND

Period	Dwelling units in new residential buildings					Alterations and additions to residential buildings	Non-residential building		Total value of building	
	Private sector		Public sector		Total		Private sector	Total		
	No.	\$m	No.	\$m						No.
1989-90	31,458	2,599.0	2,989	141.9	34,447	2,740.9	150.8	1,798.6	2,091.2	4,982.9
1990-91	30,062	2,450.6	2,675	140.5	32,737	2,591.1	172.7	1,020.0	1,472.2	4,236.0
1991-92	39,690	3,103.2	2,375	142.5	42,065	3,245.7	205.8	1,079.2	1,530.7	4,982.1
1992-93	45,992	3,700.1	1,940	129.4	47,932	3,829.6	212.9	941.8	1,383.9	5,426.3
1993-94	53,427	4,464.3	1,765	126.7	55,192	4,591.0	229.2	1,348.4	1,761.6	6,581.8
1994-95	43,596	3,856.7	1,602	144.1	45,198	4,000.7	240.9	1,570.9	2,063.5	6,305.1
1994										
July	4,492	402.5	27	2.3	4,519	404.9	22.2	98.6	138.7	565.8
August	5,235	448.4	117	30.8	5,352	479.2	21.2	123.4	144.9	645.3
September	4,884	421.8	124	8.5	5,008	430.3	22.3	98.3	114.1	566.7
October	4,051	348.1	141	8.4	4,192	356.4	22.9	150.0	213.8	593.2
November	4,353	364.2	68	5.2	4,421	369.4	25.2	108.6	148.7	543.3
December	3,153	271.6	72	5.3	3,225	276.9	17.3	78.6	113.7	408.0
1995										
January	2,688	240.6	117	9.1	2,805	249.7	14.7	107.3	133.4	397.9
February	2,795	265.4	113	10.0	2,908	275.4	16.8	96.5	140.8	433.0
March	3,243	285.2	308	23.9	3,551	309.1	19.7	157.8	181.5	510.3
April	2,636	263.0	169	12.6	2,805	275.7	16.8	43.8	78.7	371.1
May	3,024	276.8	117	8.4	3,141	285.3	22.0	194.5	256.8	564.1
June	3,042	269.0	229	19.4	3,271	288.4	19.7	313.6	398.3	706.4
July	2,600	228.0	57	4.0	2,657	232.0	28.2	120.8	147.9	408.1
August	2,868	266.7	83	7.0	2,951	273.7	22.5	162.2	290.8	587.1
September	2,480	240.9	45	3.6	2,525	244.5	23.0	179.9	222.8	490.3

(a) The scope of building approvals includes: (i) all approved new residential building jobs valued at \$10,000 or more (prior to July 1990 all approved new residential building jobs valued at \$5,000 or more); (ii) all approved non-residential building jobs valued at \$50,000 or more (prior to July 1990 approved non-residential building jobs valued at \$30,000 or more) and (iii) approved alterations and additions to residential buildings valued at \$10,000 or more.

BUILDING ACTIVITY: NUMBER OF NEW DWELLING UNITS (a) BY TYPE AND STAGE OF CONSTRUCTION, QUEENSLAND

Period	Commenced			Completed			Under construction at end of period		
	Houses (b)	Other residential buildings	Total (b)	Houses (b)	Other residential buildings	Total (b)	Houses (b)	Other residential buildings	Total (b)
1989-90	23,760	9,673	33,430	27,050	12,377	39,430	6,570	5,840	12,410
1990-91	23,570	8,203	31,770	22,970	9,751	32,740	7,080	4,039	11,120
1991-92	29,016	9,525	38,541	27,105	8,757	35,862	8,822	4,787	13,609
1992-93	33,516	13,469	46,985	33,600	11,941	45,541	8,559	6,201	14,760
1993-94	35,751	17,334	53,085	34,793	14,822	49,615	9,504	8,489	17,993
1994-95	31,049	15,113	46,162	33,356	14,821	48,177	7,154	8,538	15,692
1994									
March qtr	8,054	3,720	11,774	7,545	3,411	10,956	8,230	7,553	15,783
June qtr	9,229	4,386	13,615	7,953	3,513	11,466	9,504	8,489	17,993
September qtr	9,686	5,151	14,837	8,669	3,913	12,582	10,521	9,623	20,144
December qtr	8,788	4,315	13,103	10,190	4,227	14,417	9,118	9,649	18,767
1995									
March qtr	6,295	2,700	8,995	7,720	3,948	11,668	7,652	8,396	16,048
June qtr	6,280	2,947	9,227	6,778	2,733	9,511	7,154	8,538	15,692

(a) Including new houses and dwelling units in other residential buildings (e.g. flats, home units, etc.) but excluding units offering temporary accommodation (e.g. motels, hostels, etc.) and caretakers' quarters in non-residential buildings. (b) From September quarter 1991, these figures are presented as actual estimates and are no longer rounded to the nearest 10 units as in earlier periods.

HOUSING FINANCE FOR OWNER OCCUPATION, QUEENSLAND

Secured housing finance commitments to individuals

Period	Dwelling units involved				All banks				
	For purchase			Refinance (a)	For purchase of dwellings				Total (b)
	For construction	Newly erected	Previously established		For construction of dwellings	Newly erected	Previously established	Refinance (a)	
1989-90	14,986	2,097	37,199	..	518.4	96.4	1,441.4	..	2,168.5
1990-91	15,487	1,991	42,407	..	634.9	114.8	1,804.6	..	2,706.0
1991-92	21,493	2,658	48,842	7,584	1,007.2	143.4	2,514.9	375.5	4,285.1
1992-93	24,832	3,338	55,502	12,904	1,443.9	203.0	3,499.1	725.3	6,167.5
1993-94	25,967	4,948	58,980	18,725	1,836.9	359.3	4,141.8	1,153.7	7,949.8
1994-95	20,074	4,521	48,707	13,950	1,490.7	382.0	3,722.5	891.5	7,089.0
1994-									
June	2,439	462	5,206	1,472	171.9	33.0	375.9	95.8	720.0
July	2,160	448	4,587	1,334	155.3	31.6	338.8	81.1	658.2
August	2,283	465	4,985	1,192	168.3	35.2	359.4	69.7	679.5
September	2,072	387	4,559	1,192	157.4	31.7	340.5	72.4	646.1
October	1,825	446	4,185	1,156	127.8	40.2	321.1	72.3	605.7
November	1,893	442	4,564	1,283	135.5	40.7	338.6	84.4	661.1
December	1,581	349	3,904	1,091	113.1	31.5	323.2	72.3	588.4
1995-									
January	1,216	343	3,299	848	91.6	28.3	256.3	53.9	472.7
February	1,386	332	3,802	1,010	97.4	30.5	291.1	65.9	538.6
March	1,640	346	4,082	1,249	132.7	29.4	317.0	81.9	619.2
April	1,105	286	2,984	948	83.5	24.7	225.2	60.9	442.4
May	1,461	355	3,939	1,175	113.8	29.6	307.3	75.2	574.0
June	1,452	322	3,817	1,472	114.3	28.6	304.0	101.6	603.3
July	1,399	367	3,884	1,576	115.6	35.3	307.0	106.8	618.3
August	1,515	349	4,100	1,800	119.2	32.0	302.9	104.4	617.6

Secured housing finance commitments to individuals — continued

Permanent building societies

Period	For purchase of dwellings				Total (b)	Finance companies, government and other	Total (b)
	For construction of dwellings	Newly erected	Previously established	Refinance (a)			
	\$m	\$m	\$m	\$m			
1989-90	53.8	24.9	329.5	..	437.6	543.9	3,149.9
1990-91	92.8	29.1	585.8	..	737.8	419.3	3,863.0
1991-92	165.6	48.4	645.8	71.2	970.3	546.6	5,802.0
1992-93	215.8	67.1	736.4	147.6	1,220.5	366.8	7,754.9
1993-94	290.5	85.6	902.3	193.4	1,537.2	240.9	9,727.8
1994-95	242.7	56.8	684.4	163.2	1,198.6	232.4	8,520.0
1994-							
June	31.0	10.4	81.7	13.3	143.2	21.8	885.0
July	23.8	5.5	60.0	13.3	106.8	19.2	784.2
August	25.3	7.1	80.4	16.4	134.2	24.8	838.5
September	26.0	5.8	72.5	13.4	121.9	15.5	783.5
October	22.5	5.5	61.3	15.7	109.0	16.6	731.4
November	25.4	5.4	64.9	15.8	116.8	14.7	792.6
December	23.3	4.4	54.1	14.0	100.5	14.7	703.6
1995-							
January	12.8	4.0	36.7	10.1	67.4	15.1	555.1
February	17.6	3.3	47.4	12.0	84.9	19.5	643.0
March	19.1	3.7	48.1	14.8	90.3	21.5	731.0
April	13.2	3.8	40.7	10.5	71.2	25.9	539.4
May	18.2	5.3	61.4	13.5	102.7	21.4	698.1
June	15.4	3.0	56.9	13.6	92.8	23.6	719.6
July	14.1	2.5	41.9	11.0	72.1	47.9	738.3
August	16.5	3.0	65.5	20.0	108.2	47.9	773.8

(a) For existing home loans. Prior to July 1991 *refinance* data was included with *previously established* data. (b) Including alterations and additions.

NEW FIXED CAPITAL EXPENDITURE BY INDUSTRY GROUP AND TYPE OF ASSET, QUEENSLAND
(\$ million)

Period	Industry group (a)			Total	Type of asset	
	Mining	Manu- facturing	Other selected industries		New buildings and structures	New capital equipment
1989-90	643	1,040	2,310	3,992	1,600	2,393
1990-91	976	789	2,235	4,000	1,600	2,400
1991-92	929	576	2,109	3,615	1,402	2,213
1992-93	1,056	738	2,097	3,892	1,568	2,324
1993-94	914	977	2,208	4,099	1,453	2,646
1994-95	1,089	1,130	3,007	5,226	1,850	3,376
1994—						
March qtr	258	219	602	1,080	430	649
June qtr	179	272	679	1,129	388	742
September qtr	164	278	760	1,201	431	769
December qtr	245	281	781	1,307	495	812
1995---						
March qtr	265	261	683	1,210	437	773
June qtr	416	310	783	1,509	486	1,023

(a) Data now classified to the Australian and New Zealand Standard Industrial Classification (ANZSIC) rather than the Australian Standard Industrial Classification (ASIC).

LEASE, COMMERCIAL AND PERSONAL FINANCE, QUEENSLAND
(\$ million)

Period	Lease finance		Revolving credit limits at end of period			
	Total finance lease commitments	Commitments not drawn at end of period	Commercial finance		Personal finance	
			Total	Used	Total	Used
1994 --						
June	216.5	61.4	11,074.8	7,294.3	6,312.6	2,808.6
July	151.5	69.6	11,110.4	7,291.7	6,131.7	2,596.5
August	115.3	67.1	11,270.4	7,316.7	6,112.0	2,605.5
September	109.9	65.3	11,264.4	7,205.6	6,157.9	2,590.3
October	119.2	68.5	11,301.0	7,513.3	6,206.2	2,590.8
November	119.6	64.5	11,265.3	7,457.5	6,271.9	2,646.8
December	123.3	62.8	11,400.4	7,459.8	6,366.7	2,749.0
1995—						
January	86.6	59.6	12,339.6	8,082.8	6,431.6	2,751.6
February	96.5	63.4	12,373.5	8,130.6	6,465.8	2,782.4
March	149.1	72.1	12,521.3	8,357.2	6,554.1	2,773.2
April	102.9	65.4	12,620.0	8,351.4	6,579.2	2,785.7
May	153.9	64.9	12,737.2	8,285.1	6,622.3	2,822.7
June	202.3	68.3	12,460.6	8,320.4	6,753.6	2,874.2
July	128.4	67.2	12,551.1	8,361.1	6,843.1	2,891.5
August	125.3	70.0	12,605.9	8,351.1	6,871.5	2,860.6

SELECTED FINANCIAL INSTITUTIONS: LOANS OUTSTANDING (a), QUEENSLAND
(\$ million)

Period	Building societies		Finance companies		Credit cooperatives (b)	
	Individuals	Total	Individuals	Total	Individuals	Total
1994—						
June	3,160.0	4,224.7	1,512.5	4,222.6	1,247.1	1,265.0
July	3,213.3	4,291.6	1,525.3	4,275.5	1,266.6	1,284.4
August	3,290.0	4,368.7	1,537.5	4,332.0	1,277.5	1,295.5
September	3,346.0	4,440.6	1,563.4	4,345.4	1,297.4	1,315.2
October	3,396.6	4,512.6	1,571.9	4,378.1	1,314.2	1,332.2
November	3,470.6	4,589.1	1,593.8	4,432.6	1,332.9	1,351.4
December	3,529.0	4,660.4	1,614.7	4,440.7	1,352.4	1,370.6
1995—						
January	3,562.2	4,701.9	1,598.0	4,599.0	1,374.4	1,393.0
February	3,594.2	4,742.5	1,611.5	4,678.3	1,399.2	1,418.0
March	3,641.1	4,799.6	1,630.0	4,923.2	1,418.9	1,438.2
April	3,678.2	4,842.7	1,636.0	4,845.0	1,438.2	1,458.8
May	3,714.4	4,884.4	1,658.1	4,923.7	1,466.8	1,487.5
June	3,748.1	4,924.3	1,674.6	4,997.5	1,491.3	1,512.5
July	3,778.4	4,949.8	1,686.1	5,001.4	1,502.2	1,523.6
August	3,797.5	4,975.3	1,691.4	3,323.7	1,506.2	1,528.1

(a) At end of period. (b) Credit cooperatives with assets in Australia exceeding \$5m.

ALL BANKS: DEPOSITS AND LENDING
(\$ million)

Period	Deposits					Other lending (b)
	Current	Term (a)	Investment savings	Other	Total	
1994—						
June	8,681	13,612	4,480	3,775	30,548	36,867
July	8,825	13,839	4,518	3,809	30,991	37,711
August	8,929	14,054	4,516	3,822	31,321	38,257
September	9,274	14,562	4,408	3,915	32,158	38,457
October	9,093	15,400	4,360	3,882	32,735	39,080
November	9,076	15,645	4,289	3,865	32,875	39,731
December	9,336	15,848	4,207	3,835	33,226	40,383
1995—						
January	8,999	15,904	4,132	3,755	32,792	40,459
February	8,849	16,540	4,053	3,666	33,108	41,005
March	8,790	16,786	4,004	3,556	33,137	41,637
April	8,717	16,833	3,931	3,511	32,993	42,067
May	8,771	17,346	3,994	3,491	33,603	42,428
June	8,770	17,364	3,946	3,496	33,577	42,941
July	9,145	17,507	3,966	3,497	34,116	43,691
August	9,262	17,942	3,972	3,505	34,682	44,241

(a) Including certificates of deposit. (b) Excluding public sector securities held by banks and commercial lending through intermediaries.

VALUE OF INTERSTATE EXPORTS (a), QUEENSLAND
(\$'000)

(Source: Queensland Government Statistician)

Period	Total	Selected commodities (b)					Miscellaneous manufactured items
		Meat (c)	Crude materials, inedible (d)	Chemicals and related materials	Manuf. goods class. chiefly by material	Machinery and transport equipment	
1989-90	4,080,271	155,216	845,613	145,110	856,199	715,238	256,280
1990-91	3,563,710	163,714	689,646	151,884	750,505	493,470	233,875
1991-92	3,858,636	179,091	808,259	155,304	787,723	557,196	235,352
1992-93	4,235,353	180,508	743,687	178,785	857,203	656,852	252,174
1993-94	4,627,314	213,859	757,955	190,465	925,859	868,571	294,577
1994-95	5,326,975	203,049	705,341	196,411	1,130,058	1,086,216	329,097
<i>1994—</i>							
March qtr	1,117,521	47,801	191,617	50,048	227,388	223,144	71,078
June qtr	1,122,124	48,477	173,999	40,098	229,162	236,024	67,747
September qtr	1,230,336	54,945	162,576	51,262	278,047	252,787	83,057
December qtr	1,289,254	61,163	150,908	53,472	275,267	287,952	94,784
<i>1995—</i>							
March qtr	1,360,501	39,075	164,586	49,902	287,848	271,385	75,254
June qtr	1,446,884	47,866	227,270	41,774	288,897	274,092	76,002

(a) Interstate exports are compiled using a classification based on the Standard International Trade Classification (Revision 3). (b) These are selected major items only and therefore do not add to the totals shown. (c) All meat and meat products, fresh, frozen, preserved or canned. (d) Including gold ores and concentrates

VALUE OF INTERSTATE IMPORTS (a), QUEENSLAND
(\$'000)

(Source: Queensland Government Statistician)

Period	Total	Selected commodities (b)					Miscellaneous manufactured items
		Food and live animals	Mineral fuels and lubricants	Chemicals	Iron and steel	Machinery and transport equipment	
1989-90	9,018,413	1,358,881	490,777	1,018,727	830,342	2,796,009	998,637
1990-91	8,678,424	1,411,156	489,550	1,029,246	665,447	2,521,279	1,015,965
1991-92	8,856,882	1,517,319	443,001	1,088,921	642,238	2,639,573	927,891
1992-93	9,768,709	1,438,186	598,897	1,257,271	645,807	2,844,247	1,273,387
1993-94	11,426,272	1,781,351	728,036	1,387,728	752,374	3,368,671	1,559,800
1994-95	12,496,497	1,948,425	754,779	1,472,191	796,620	3,794,489	1,737,118
<i>1994—</i>							
March qtr	2,676,608	453,029	142,027	346,083	194,143	773,491	341,853
June qtr	2,926,388	485,315	161,326	335,042	180,854	930,733	374,741
September qtr	3,177,155	485,416	193,965	375,582	212,989	960,038	443,929
December qtr	3,285,648	480,582	200,431	390,609	202,933	973,104	496,864
<i>1995—</i>							
March qtr	3,051,802	506,910	192,185	355,307	193,640	911,251	426,281
June qtr	2,981,891	475,517	168,198	350,693	187,057	950,096	370,044

(a) Interstate imports are compiled using a classification based on the Standard International Trade Classification (Revision 3). (b) These are selected major items only and therefore do not add to the totals shown.

VALUE OF FOREIGN EXPORTS (a), QUEENSLAND
(\$'000)

Period	Selected commodities (c)						
	Total (b)	Meat (d)	Sugar (e)	Wool (f)	Coal	Cereal grains	Nonferrous metals
1989-90	10,663,975	1,375,581	1,050,372	227,050	3,216,485	327,839	943,104
1990-91	10,801,738	1,529,276	879,350	157,451	3,258,324	270,121	963,054
1991-92	11,046,851	1,610,688	680,645	212,801	3,812,275	89,901	861,740
1992-93	12,018,360	1,779,981	986,462	154,362	4,379,206	146,213	934,688
1993-94	12,276,366	1,854,196	1,231,017	118,975	4,144,179	179,725	856,185
1994-95	12,740,140	1,594,813	1,619,454	170,246	4,124,509	83,496	832,345
1994—							
July	1,247,655	155,928	203,404	15,779	396,872	9,377	82,588
August	1,161,923	155,535	216,988	14,537	340,538	14,802	78,384
September	1,120,013	161,490	164,534	19,735	300,964	14,757	90,349
October	1,167,855	174,487	196,522	15,910	356,859	10,086	73,689
November	1,085,974	149,146	194,227	18,639	316,403	571	63,245
December	966,563	113,398	113,504	12,545	292,188	6,572	80,717
1995—							
January	857,831	82,866	87,227	11,705	329,642	5,098	48,284
February	843,528	97,314	76,295	5,508	280,639	5,972	79,370
March	1,068,691	126,544	95,000	17,793	383,345	6,753	84,134
April	1,030,528	119,264	121,580	13,666	344,124	1,457	73,029
May	1,176,764	123,346	92,486	12,885	421,760	6,422	26,910
June	1,012,814	135,495	57,687	11,545	361,175	1,629	51,645
July	1,359,817	168,261	219,217	15,547	406,581	1,108	87,828
August	1,277,565	129,182	225,481	10,301	351,752	3,732	113,497
September	1,321,360	133,697	225,706	9,254	386,378	1,007	95,826

(a) Foreign export data are compiled on the Harmonised Commodity Description Coding System (HICDCS), not the Standard International Trade Classification (Revision 3).
 (b) Excluding non-merchandise trade; including re-exports. (c) These are selected major items only and therefore do not add to the totals shown. From April 1992, exports are compiled on the basis of goods shipped in any calendar month rather than the documentation of goods shipped in that or earlier months. Data have been revised back to July 1991 on the new compilation basis. (d) All meats and meat products, fresh, frozen or canned. (e) Raw or refined. (f) Greasy or scoured.

VALUE OF FOREIGN IMPORTS (a), QUEENSLAND
(\$'000)

Period	Total (b)	Selected commodity groups (c)					Other manufactured goods (d)
		Live animals, food, beverages and tobacco	Mineral fuels, lubricants, etc.	Chemicals	Machinery and transport equipment		
					Road motor vehicles	Other	
1989-90	4,258,170	167,873	317,880	335,195	750,456	1,163,490	975,538
1990-91	4,903,467	180,380	663,435	322,521	672,449	1,279,174	944,066
1991-92	5,626,691	201,074	581,272	361,265	824,485	1,229,047	1,147,850
1992-93	6,334,148	225,565	703,091	389,090	1,144,617	1,374,361	1,253,114
1993-94	6,869,174	261,574	781,503	414,972	1,285,421	1,531,345	1,429,015
1994-95	7,772,075	336,636	808,817	474,430	1,647,490	1,893,167	1,610,475
1994—							
August	645,712	24,529	50,683	45,014	146,409	147,747	155,889
September	690,904	21,077	96,647	42,627	151,148	151,707	154,209
October	683,464	27,382	68,354	57,755	144,651	179,594	140,520
November	662,979	28,105	24,861	42,987	148,521	180,776	149,713
December	628,833	29,594	62,786	31,950	113,105	168,643	124,067
1995—							
January	585,488	36,396	55,997	37,012	104,347	138,003	126,682
February	594,049	29,984	52,005	32,903	122,195	148,685	126,816
March	717,694	29,327	88,323	34,566	158,748	165,092	138,899
April	565,605	20,390	35,013	41,268	143,581	153,524	115,481
May	743,829	27,161	90,023	40,189	133,242	192,113	137,870
June	650,465	40,235	98,459	30,383	138,906	141,260	119,067
July	643,435	31,103	61,885	48,035	131,845	150,566	146,826
August	677,658	24,691	73,239	42,567	130,162	155,020	149,837
September	666,268	26,420	103,205	55,543	97,941	141,226	157,460
October	709,159	27,554	75,923	52,098	146,936	177,162	158,737

(a) Imports relate to the State where the import entry was lodged with the Australian Customs Service. Foreign import data are compiled on the Harmonised Commodity Description Coding System (HICDCS), not the Standard International Trade Classification (Revision 3). (b) Excluding non-merchandise trade. (c) These are selected major groups only and therefore do not add to the totals shown. Imports are recorded statistically in the calendar month in which the import entries are both finalised by the Australian Customs Service and passed to the ABS for further processing. (d) Manufactured goods not included in the other selected commodity groups listed in this table.

RETAIL TRADE (a): TURNOVER BY INDUSTRY, QUEENSLAND
(\$ million)

Industry	1994-95	1994					1995			
		June	July	August	September	June	July	August	September	
Food retailing	7,936.1	592.4	617.7	620.5	625.2	689.2	703.2	719.5	710.7	
Department stores	1,915.5	154.9	129.7	138.7	156.6	163.5	141.7	155.1	155.5	
Clothing and soft good retailing	1,558.5	124.3	124.6	124.2	136.6	138.0	112.6	121.5	135.0	
Household good retailing	2,193.9	190.2	183.6	185.6	191.4	197.3	176.9	177.1	178.9	
Recreational good retailing	1,495.5	98.8	107.0	107.5	107.9	124.2	127.8	126.4	132.7	
Other retailing	2,117.6	165.3	170.3	186.8	185.9	168.2	172.3	180.2	180.3	
Hospitality and services	3,596.4	264.5	292.5	293.0	291.8	292.8	308.1	317.9	311.2	
Total	20,813.5	1,590.4	1,625.4	1,656.3	1,695.4	1,773.2	1,742.6	1,797.7	1,804.3	

(a) Excluding motor vehicles, parts, petrol, etc.

TRANSPORT SERVICES: QUEENSLAND RAILWAYS AND BRISBANE CITY COUNCIL

Period	Queensland Railways (a)							Brisbane City Council bus passenger earnings (d)	
	Traffic (b) train-kilometres	Passenger journeys sold (c)	Paying freight		Passenger earnings		Total earnings		Total working expenses
			Tonnes carried	Tonne-kms	Suburban	Country			
	'000	'000	'000	'000	\$'000	\$'000	\$'000	\$'000	\$'000
1989-90	32,927	44,141	82,543	22,579,438	45,341	15,431	1,145,416	975,249	33,602
1990-91	31,744	42,988	82,964	22,868,638	47,810	15,061	1,205,642	986,722	37,118
1991-92	29,509	41,076	90,658	24,719,163	48,382	27,972	1,245,592	971,446	40,983
1992-93	28,925	40,392	90,303	24,613,660	48,703	36,037	1,360,464	1,346,544	42,558
1993-94	29,106	39,340	92,092	25,174,858	52,522	42,175	1,359,128	1,362,059	44,218
1994-95	n.y.a.	n.y.a.	n.y.a.	n.y.a.	n.y.a.	n.y.a.	n.y.a.	n.y.a.	49,065
1994—									
July	n.a.	3,012	8,738	2,450,169	4,744	(e) 4,210	133,274	n.a.	4,555
August	n.a.	3,330	8,490	2,406,491	(e) 5,017	(e) 4,187	132,167	n.a.	3,849
September	n.a.	3,158	8,378	2,333,940	4,288	3,893	122,779	n.a.	3,577
October	n.a.	3,202	8,495	2,313,130	4,584	3,137	115,882	n.a.	4,553
November	n.a.	3,278	7,968	1,813,830	4,456	3,333	112,208	n.a.	3,537
December	n.a.	2,664	7,606	2,120,311	4,014	2,863	116,538	n.a.	3,444
1995—									
January	n.a.	2,506	7,879	2,181,326	4,696	2,686	109,911	n.a.	3,370
February	n.a.	3,186	7,139	1,980,817	4,082	2,347	102,174	n.a.	5,581
March	n.a.	3,450	8,478	2,287,351	5,021	3,219	156,796	n.a.	4,112
April	n.a.	3,022	8,091	2,190,719	3,609	3,021	117,325	n.a.	4,427
May	n.a.	3,537	8,431	2,304,048	4,758	4,364	121,521	n.a.	3,722
June	n.a.	n.y.a.	n.y.a.	n.y.a.	n.y.a.	n.y.a.	n.y.a.	n.a.	4,338
July	n.a.	3,191	8,484	2,349,262	3,900	4,080	150,106	n.a.	5,127
August	n.a.	3,447	9,190	2,491,039	4,834	5,807	162,377	n.a.	3,872
September	n.a.	3,211	8,529	2,325,714	5,420	1,957	150,917	n.a.	3,498

(a) Source: Queensland Rail. From July 1992, Queensland Rail introduced an accrual accounting system (previously cash based).

(b) Comprising goods and passenger.

(c) Based on ticket sales. All season ticket journeys counted in month of sale.

(d) Source: Brisbane City Council.

(e) Including additional government concession payments for half price pensioner travel.

REGISTRATION OF NEW MOTOR VEHICLES AND MOTOR VEHICLES ON REGISTER, QUEENSLAND

Period	New motor vehicles registered								Number on register at end of period (a) ('000)		
	Original series (a)						Seasonally adjusted series		Passenger vehicles	Total motor vehicles (b)	
	Passenger vehicles	Light commercial vehicles	Trucks			Buses	Motor cycles	Passenger vehicles			Total motor vehicles (b)
			Rigid	Articulated	Non-freight carrying						
1989-90	79,824	18,751	2,780	838	478	660	4,066	1,272.1	1,687.3
1990-91 (c)	78,040	17,680	2,208	406	321	675	4,023	1,304.9	1,721.8
1991-92	76,493	16,481	2,187	400	115	810	3,667	1,343.8	1,767.1
1992-93	81,656	18,916	2,316	524	91	899	3,865	1,393.6	1,827.6
1993-94	86,045	20,489	2,488	739	144	778	3,522	1,454.4	1,905.8
1994-95	92,586	21,605	2,743	1,047	190	1,019	3,954	n.y.a.	n.y.a.
1994—											
July	8,649	2,517	275	100	10	85	293	8,144	10,914
August	7,294	1,377	203	84	6	68	339	6,986	8,706
September	7,352	1,514	190	93	9	72	314	6,957	8,993
October	8,375	1,939	245	100	15	88	258	8,462	10,724
November	7,462	1,970	259	101	28	90	371	7,424	9,769
December	8,540	1,888	264	84	21	121	379	8,076	10,628
1995—											
January	5,944	1,177	122	48	7	56	322	7,509	9,316
February	7,004	1,470	209	78	6	101	289	7,768	9,855
March	7,540	1,666	236	65	23	72	377	6,362	8,054
April	8,348	2,042	191	60	30	84	297	10,041	13,274
May	8,963	2,145	271	96	15	78	392	8,474	10,739
June	7,115	1,900	278	138	20	104	323	6,878	8,926	n.y.a.	n.y.a.
July	10,256	2,500	280	73	20	105	378	9,935	12,656
August	7,511	1,352	148	48	3	62	313	7,089	8,705
September	7,522	1,651	169	34	8	66	337	7,285	9,455

(a) Source: Queensland Department of Transport and Commonwealth Department of Administrative Services. (b) Excluding motor cycles, plant, equipment and trailers. (c) From January 1991, data compiled using a different processing system.

ROAD TRAFFIC ACCIDENTS, QUEENSLAND

Period	Persons killed (a)			Persons injured (b)		
	Brisbane Statistical Division	Rest of State	Total	Brisbane Statistical Division	Rest of State	Total
1989	114	314	428	3,597	5,642	9,239
1990	107	292	399	3,874	5,860	9,734
1991 (c)	121	274	395	3,527	5,254	8,781
1992	125	291	416	3,747	5,723	9,470
1993	111	285	396	3,995	5,926	9,921
1994	129	293	422	4,426	6,340	10,766
1994—						
August	12	23	35	350	559	909
September	7	26	33	387	531	918
October	28	32	60	439	569	1,008
November	11	27	38	357	537	894
December	11	28	39	437	550	987
1995—						
January	7	33	40	315	478	793
February	8	24	32	399	505	904
March	8	30	38	412	527	939
April	6	21	27	342	534	876
May	11	34	45	412	512	924
June	9	33	42	388	573	961
July	7	34	41	387	591	978
August	11	22	33	399	508	907
September	11	32	43	n.y.a.	n.y.a.	n.y.a.
October	11	29	40	n.y.a.	n.y.a.	n.y.a.

(a) Killed instantly or died within 30 days of receiving injuries. (b) Injured to an extent of requiring medical treatment. (c) From January 1991. Source: Queensland Department of Transport.

OIL INDUSTRY: SALES OF MAIN PETROLEUM PRODUCTS, QUEENSLAND (a)

(Source: Department of Primary Industries and Energy)

(million litres)

Period	Aviation gasoline	Automotive gasoline (b)	Aviation turbine fuel	Lighting and power kerosene (c)	Liquid petroleum gas	Auto-motive diesel oil (d)	Industrial and marine diesel fuel		Fuel oil	
							Inland	Bunkers	Inland (e)	Bunkers
1989-90	30.9	3,166.4	488.2	23.9	307.0	2,393.8	—	2.8	595.6	131.7
1990-91	25.8	3,093.7	635.8	22.5	312.9	2,395.3	—	2.1	136.3	126.4
1991-92	22.7	3,179.6	691.3	15.9	302.6	2,464.9	—	2.1	117.1	103.7
1992-93	24.0	3,278.0	813.0	27.1	306.2	2,562.2	—	2.6	70.8	73.2
1993-94	24.6	3,430.5	900.6	16.5	414.5	2,704.5	0.5	1.5	92.5	78.3
1994-95	26.4	3,515.1	1,054.0	13.4	439.9	2,856.1	1.4	0.5	111.8	205.9
1994—										
July	2.1	306.7	85.8	1.7	34.5	250.5	0.3	0.2	8.8	41.0
August	2.2	289.0	87.1	1.6	41.7	249.7	—	—	9.0	5.1
September	2.5	289.7	89.5	0.8	35.8	247.8	0.3	0.1	7.5	31.9
October	2.0	301.8	89.5	0.9	34.0	253.6	—	—	7.2	8.1
November	2.3	292.5	89.3	0.9	39.5	266.9	0.2	—	7.8	27.3
December	1.8	304.4	87.9	0.8	40.4	212.9	—	—	8.1	31.3
1995—										
January	1.8	291.5	87.2	0.9	35.2	205.2	0.3	—	7.0	7.3
February	1.7	263.1	77.2	0.8	35.0	207.6	—	—	7.2	3.8
March	2.6	305.6	89.5	0.6	36.6	246.7	—	—	8.4	10.1
April	2.2	274.6	86.6	0.7	34.3	209.8	0.3	0.1	7.9	6.6
May	2.6	307.3	92.7	1.8	39.7	250.6	—	0.1	12.1	26.5
June	2.6	288.9	91.7	1.9	33.2	254.8	—	—	20.8	6.9
July	2.3	298.8	95.5	1.8	28.9	249.9	0.1	0.3	12.6	6.6
August	2.5	295.6	89.9	1.1	37.8	261.3	—	0.2	13.3	4.6
September	2.5	306.6	86.3	0.7	35.1	266.0	—	0.2	7.9	24.0

(a) The State marketing area also includes the Murwillumbah district of New South Wales. (b) Including leaded and unleaded petrol. (c) Including heating oil (33,000 litres in September 1995). (d) Including a small quantity of bunker sales. (e) Excluding refinery fuel.

LICENSED HOTELS, MOTELS, ETC. WITH FACILITIES (a), QUEENSLAND

Period	Estab-lishments	Guest rooms	Bed spaces	Room nights occupied	Room occupancy	Guest nights	Bed occupancy	Guest arrivals	Takings	
										No.
1989-90	1,111	36,785	111,226	6,731,366	51.0	12,455,970	31.1	5,533,649	483,617	
1990-91	1,124	39,074	117,991	7,091,085	50.6	13,032,424	30.8	5,615,992	541,311	
1991-92	1,109	39,187	119,330	7,734,236	54.4	14,252,630	32.9	6,015,824	616,765	
1992-93	1,121	39,965	121,403	8,410,946	58.0	15,572,091	35.3	6,517,376	685,384	
1993-94	1,101	40,211	122,473	9,072,760	62.0	16,959,444	38.2	7,095,147	779,950	
1994-95	1,102	41,301	126,304	9,384,803	63.1	17,424,499	38.4	7,336,981	858,115	
1994—										
January	1,093	40,062	121,758	761,679	61.3	1,609,490	42.6	628,235	69,858	
February				650,487	58.1	1,155,453	34.0	493,385	56,159	
March				728,631	58.8	1,302,062	34.6	555,527	64,588	
April	1,101	40,211	122,473	752,569	62.4	1,421,254	38.7	602,956	68,000	
May				697,637	56.0	1,217,196	32.1	527,588	59,878	
June				751,647	62.3	1,410,609	38.4	602,120	62,598	
July	1,095	40,382	122,886	845,271	67.9	1,596,864	42.1	689,510	72,458	
August				863,925	69.0	1,592,045	41.8	669,930	75,072	
September				846,254	69.9	1,631,459	44.3	681,164	75,029	
October	1,101	40,760	124,631	877,630	69.5	1,612,018	41.8	671,129	80,959	
November				791,271	64.8	1,410,119	37.8	594,978	72,714	
December				736,536	58.3	1,461,909	37.9	604,322	71,659	
1995—										
January	1,105	40,974	124,695	778,836	61.4	1,610,707	41.7	615,355	75,801	
February				658,896	57.5	1,162,781	33.4	496,488	59,630	
March				750,543	59.2	1,309,734	33.9	557,363	68,599	
April	1,102	41,301	126,304	739,734	60.5	1,401,757	37.5	596,432	70,789	
May				733,686	57.6	1,255,013	32.2	550,940	67,692	
June				762,221	61.5	1,380,093	36.4	609,370	67,713	

(a) From December quarter 1993, hotel, motel and guest house establishments with fewer than five rooms have been formally excluded from the scope of this statistical collection.

CARAVAN PARKS PROVIDING PREDOMINANTLY SHORT-TERM ACCOMMODATION, QUEENSLAND

Period (a)	Estab- lishments	Powered sites (b)	Unpowered sites	Cabins, etc.	Total sites	Sites occupied by long-term guests	Other sites perman- ently reserved (c)	Site nights occupied (c)	Site occup- ancy (c)	Takings
						No.	No.	No.	%	
1989-90	281	14,407	9,373	1,153	24,933	3,009,850	34.6	29,816
1990-91	284	14,555	9,092	1,212	24,859	3,005,201	33.0	31,382
1991-92	253	13,366	8,948	1,262	23,576	2,741,604	32.4	30,888
1992-93	226	11,764	8,478	1,158	21,400	2,579,196	32.8	29,646
1993-94	238	12,105	8,268	1,266	21,639	2,627,093	33.7	31,504
1994-95	238	11,925	8,122	1,270	21,317	2,648,745	34.4	33,571
<i>1994—</i>										
January	232	11,893	8,261	1,243	21,397	1,769	675	232,867	35.1	2,890
February								136,659	22.9	1,504
March								157,901	23.9	1,891
April								204,582	31.5	2,437
May								196,084	29.4	2,301
June	238	12,105	8,268	1,266	21,639	1,821	755	263,655	40.9	3,232
July								313,216	48.1	3,942
August								305,787	47.1	3,677
September								259,824	41.4	3,393
October								194,689	29.9	2,448
November	238	11,856	7,936	1,313	21,105	1,744	723	171,288	27.1	2,132
December								210,203	32.1	2,641
<i>1995—</i>										
January	238	11,864	7,785	1,322	20,971	1,742	728	232,292	35.7	3,181
February								136,918	23.3	1,581
March								156,877	24.1	1,903
April								210,619	32.9	2,824
May								238	11,925	8,122
June	256,047	40.1	3,359							

(a) From September quarter 1991 and September quarter 1992, respectively, data are not comparable with those for previous periods as some caravan parks previously classified as short-term were reclassified as long-term. (b) Including both on-site van sites and other powered sites. (c) From September quarter 1992, caravan park sites, etc. permanently reserved but only casually occupied by their tenants have been recorded continuously as site nights occupied irrespective of whether the tenants of individual sites were in residence on any particular night. Occupancy measures from September quarter 1992 are not therefore comparable with those from previous quarters.

METEOROLOGY, BRISBANE

(Source: Bureau of Meteorology)

Period	Rainfall			Shade temperature			
	Total	Wei	Average (b)	Absolute maximum	Absolute minimum	Mean maximum	Mean minimum
		days (a)					
1989	1,261	140	1,190	34.0	3.2	24.6	15.5
1990	1,369	125		38.5	1.3	25.0	15.6
1991	792	98		33.5	3.0	25.9	15.5
1992	1,274	110		34.8	3.4	25.1	15.3
1993	726	117		36.3	4.2	25.3	15.8
1994	838	113		37.5	0.6	25.2	14.7
<i>1994—</i>							
August	4	3	43	25.7	0.6	21.7	8.4
September	30	5	33	32.3	2.6	24.8	9.9
October	43	6	91	33.3	8.6	25.2	14.2
November	33	7	96	36.6	12.0	28.2	18.4
December	60	9	125	33.6	16.1	28.0	19.3
<i>1995—</i>							
January	43	9	161	37.6	17.4	29.4	20.9
February	318	14	175	32.1	18.0	27.8	20.8
March	71	10	146	32.8	14.3	28.4	19.0
April	48	14	92	29.4	9.7	25.6	15.9
May	32	13	86	25.4	9.0	23.3	14.5
June	44	7	72	24.5	2.4	20.6	10.6
July	6	1	65	28.9	1.3	21.0	7.4
August	22	5	43	25.2	1.7	21.8	9.8
September	33	8	33	28.3	4.5	23.9	12.7
October	60	8	91	30.2	10.5	25.0	14.9

(a) Days on which 0.1 millimetres or more of rain fell. (b) Average of all years of record.



Are you keeping up with the demographic changes facing Queensland society today ?

The changing distribution of the population means that both the public and private sectors are faced with important planning decisions.

Estimated Resident Population by Age and Sex in Statistical Local Areas, Queensland, 30 June 1994 now gives you easy access to the latest population estimates from the Australian Bureau of Statistics to assist in that decision making.

With details of age groupings and the sex of residents *Estimated Resident Population by Age and Sex in Statistical Local Areas, Queensland, 30 June 1994* is available either in publication format (3224.3) or as data on floppy disk (3227.3)

Priced at a low \$31.00 for the publication (3224.3) or \$100.00 for the floppy disk, *Estimated Resident Population by Age and Sex in Statistical Local Areas, Queensland, 30 June 1994* will prove to be a valuable tool to assist you in your work. Purchase your copy today by **completing the order form below.**



ORDER FORM

Complete the details below and return it, together with payment to:

The Bookshop	or Phone on (07) 222 6350
Australian Bureau of Statistics	
GPO Box 9817	or Fax us on (07) 229 6042
BRISBANE QLD 4001	

Please forward.....copy(ies) of *Estimated Resident Population by Age and Sex in Statistical Local Areas, Queensland, 30 June 1994 (3224.3)* @ \$31.00 per publication. (Price includes domestic postage and handling.)

AND/OR

Please forward.....copy(ies) of *Estimated Resident Population by Age and Sex in Statistical Local Areas, Queensland, 30 June 1994 (3227.3)* @ \$100.00 per floppy. (Price includes domestic postage and handling.)

Please find enclosed my cheque/money order for \$..... (Mark cheques **Not Negotiable**. Make cheques/money orders payable to: **CPM, Australian Bureau of Statistics**)

OR

Debit my: Bankcard Mastercard Visa Amex for \$.....

Card number: _____ Expiry date: ___/___/___

Name as it appears on card: _____ Cardholder's signature: _____

Address to send purchase(s) to: (PLEASE USE BLOCK LETTERS)

Contact name: _____

Contact position/title: _____

Name of organisation: _____

Address: _____ Postcode: _____

Telephone number in case of queries: _____ Fax number: _____

QUEENSLAND STATISTICAL PUBLICATIONS

Queensland publications may be obtained from the Queensland Office of the Australian Bureau of Statistics, 313 Adelaide Street, Brisbane (telephone (07) 3222 6350) or by writing to GPO Box 9817, Brisbane Q 4001. Prices shown are for the latest issue and include postage and handling charges. Unpublished information on many statistical series is also available and inquiries should be directed to the Inquiry Service on (07) 3222 6351.

	GENERAL				PUBLIC FINANCE
1103.3	Discovering North Queensland Statistically (\$10.00) irr	5502.3	Local Government (\$21.00) a ☉		
1108.3	Directory of Small Area Statistics (\$5.00) irr	5624.3	Survey of Manufacturing Investment and Exports (\$15.00) irr		
1301.3	Queensland Year Book (\$39.00) a	5670.3	Consumer Credit (\$8.50) irr		
1302.3	Queensland Pocket Year Book (\$10.00) a				
1304.3	Monthly Summary of Statistics (\$12.00) m				LABOUR AND PRICES
1307.3	Economic Indicators (\$10.00) m	6201.3	The Labour Force (\$18.00) q		
1314.3	Regional Statistics (\$20.00) a ☉				
1360.0	Measuring Australia's Economy (\$14.50) a				
	CENSUS OF POPULATION AND HOUSING				AGRICULTURE AND FISHING
2710.3	1991 Census- Census Characteristics of States: Queensland (\$85.00) irr	7111.3	Principal Agricultural Commodities, Preliminary (\$14.50) a		
2730.3	1991 Census- Census Counts for Small Areas: Queensland (\$25.00) irr ☉	7113.3	Agriculture (\$30.00) a		
2740.0	1991 Census - Australia's Aboriginal and Torres Strait Islander Population (\$30.00) irr	7204.3	Livestock Products - Meat (\$5.00) m		
2839.3	1991 Census- Gold Coast Region ... a social atlas (\$45.00) irr	7322.3	Fruit (\$13.00) a		
2840.3	1991 Census - Brisbane ... a social atlas (\$45.00) irr	7503.3	Value of Agricultural Commodities Produced (\$15.50) a		
	INTERCENSAL ESTIMATES OF POPULATION, POPULATION PROJECTIONS, VITAL STATISTICS				MANUFACTURING AND MINING
3104.3	Demographic History of Queensland (\$50.00) irr ☉	8221.3	Manufacturing Industry (\$16.50) a		
3201.3	Estimated Resident Population and Area, Preliminary (\$25.00) a ☉	8401.3	Census of Mining Establishments: Details of Operations by Industry Subdivision (\$10.50) a		
3202.3	Estimated Resident Population and Area (\$25.00) a ☉	8402.3	Mineral Production (\$5.00) a		
3212.3	Estimated Resident Population (\$25.00) irr ☉				
3216.3	Migration Patterns in Queensland (\$15.00) irr				
3224.3	Age and Sex Distribution of the Estimated Resident Population (\$30.00) a ☉				
3227.3	Estimated Resident Population by Age and Sex in Statistical Local Areas - Data on Floppy Disk (\$100.00) a ☉				
3311.3	Demography (\$27.50) a ☉				
3312.3	Deaths (\$15.00) a ☉				
	EDUCATION, HEALTH AND WELFARE, LAW AND ORDER				TOURISM AND RETAIL TRADE
4105.3	Queensland Families: Facts and Figures (\$25.00) irr	8623.3	Retailing in Queensland (\$15.00) irr ☉		
4110.3	Participation in Sporting and Physical Recreational Activities (\$10.00) irr	8633.3	Overseas and Interstate Visitors to Queensland Households and Interstate Trips by Queenslanders (\$12.00) irr		
4123.3	Queensland's Young People (\$12.50) irr	8635.3	Tourist Accommodation (\$25.00) q		
4370.3	National Health Survey: Health Status Indicators (\$80.00) irr	8645.3	Tourist Accommodation Atlas of Queensland (\$35.00) irr		
4375.3	National Health Survey: Health Related Actions (\$80.00) irr	8637.3	Intrastate Travel by Queensland Households (\$10.00) irr		
4380.3	National Health Survey: Health Risk Factors (\$80.00) irr				BUILDING AND CONSTRUCTION
4509.3	Crime and Safety (\$11.50) irr	8731.3	Building Approvals (\$12.00) m ☉		
		8741.3	Dwelling Unit Commencements Reported by Approving Authorities (\$11.00) m ☉		
		8743.3	Dwelling Unit Commencements: Small Area Statistics (\$10.50) a ☉		
		8752.3	Building Activity (\$12.00) q		

a - annual, q - quarterly, m - monthly, irr - irregular.
 ☉ Information shown for each local government area.

Monthly Summary of Statistics, Queensland, December 1995

Catalogue No. 1304.3



2130430012958
ISSN 0048-6396

Recommended retail price: \$12.00